

Introduction to Invasive Non-Native Species

Lizzy Webster

Biodiversity Officer, Denbighshire County Council



Outline

- Types of threat
- What are invasive non-native species?
- Problems caused
- INNS in detail
- Amphibian disease
- Reporting INNS
- Projects



What are the threats?



Invasive non-native species



Tree disease



Amphibian disease

What are invasive non-native species?

- Species from outside Britain
- Arrived here intentionally or accidentally
- Have serious negative impact on native species, economy and human health



Problems caused by INNS



Transmission of disease to native species



Problems caused by INNS



Competition with native species



Problems caused by INNS



Predation on native species



Problems caused by INNS



Increased flooding risk

Problems caused by INNS



Infrastructure damage



Problems caused by INNS



Human health risks



Some problem species...



Himalayan balsam



Japanese knotweed



Grey squirrel



Giant hogweed



Australian swamp stonecrop / *Crassula*



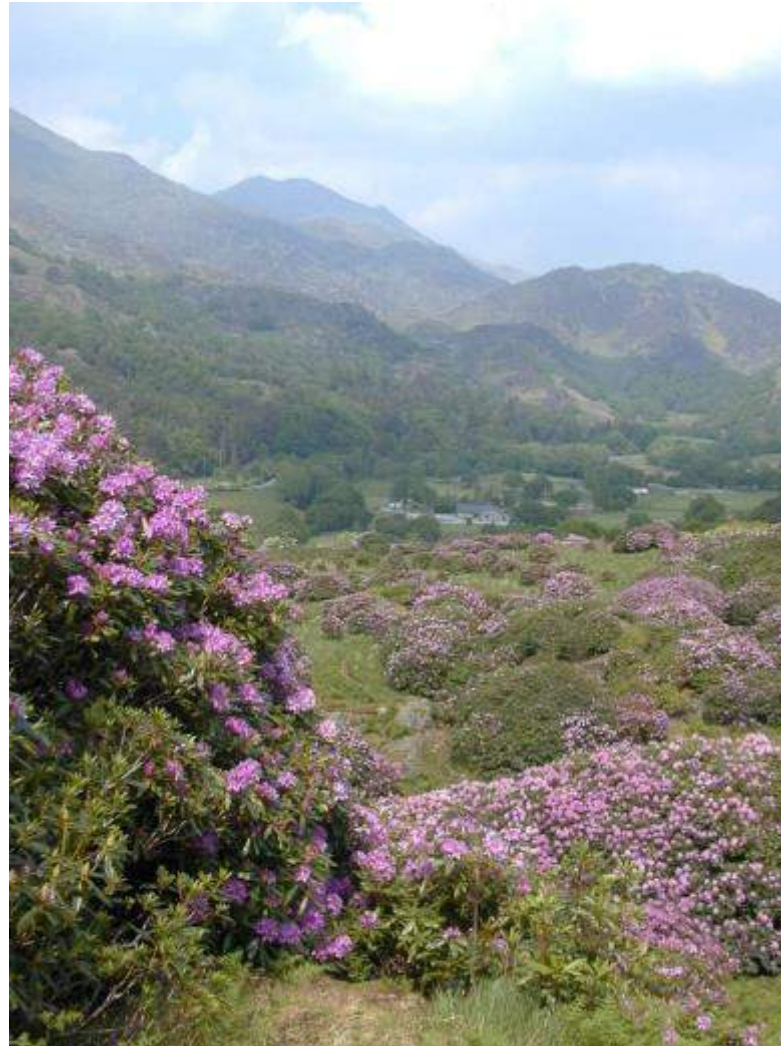
Water fern / *Azolla*



American signal crayfish



Rhododendron



American mink



Chinese mitten crab



Butterfly bush / *Buddleia*



Harlequin ladybird



Floating pennywort



Orange balsam



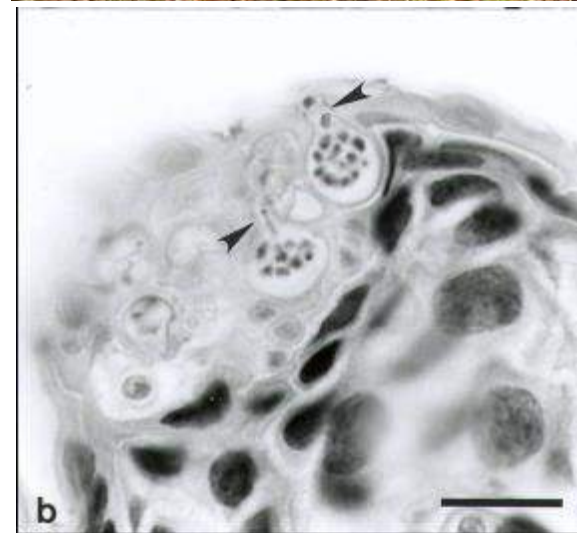
Killer shrimp



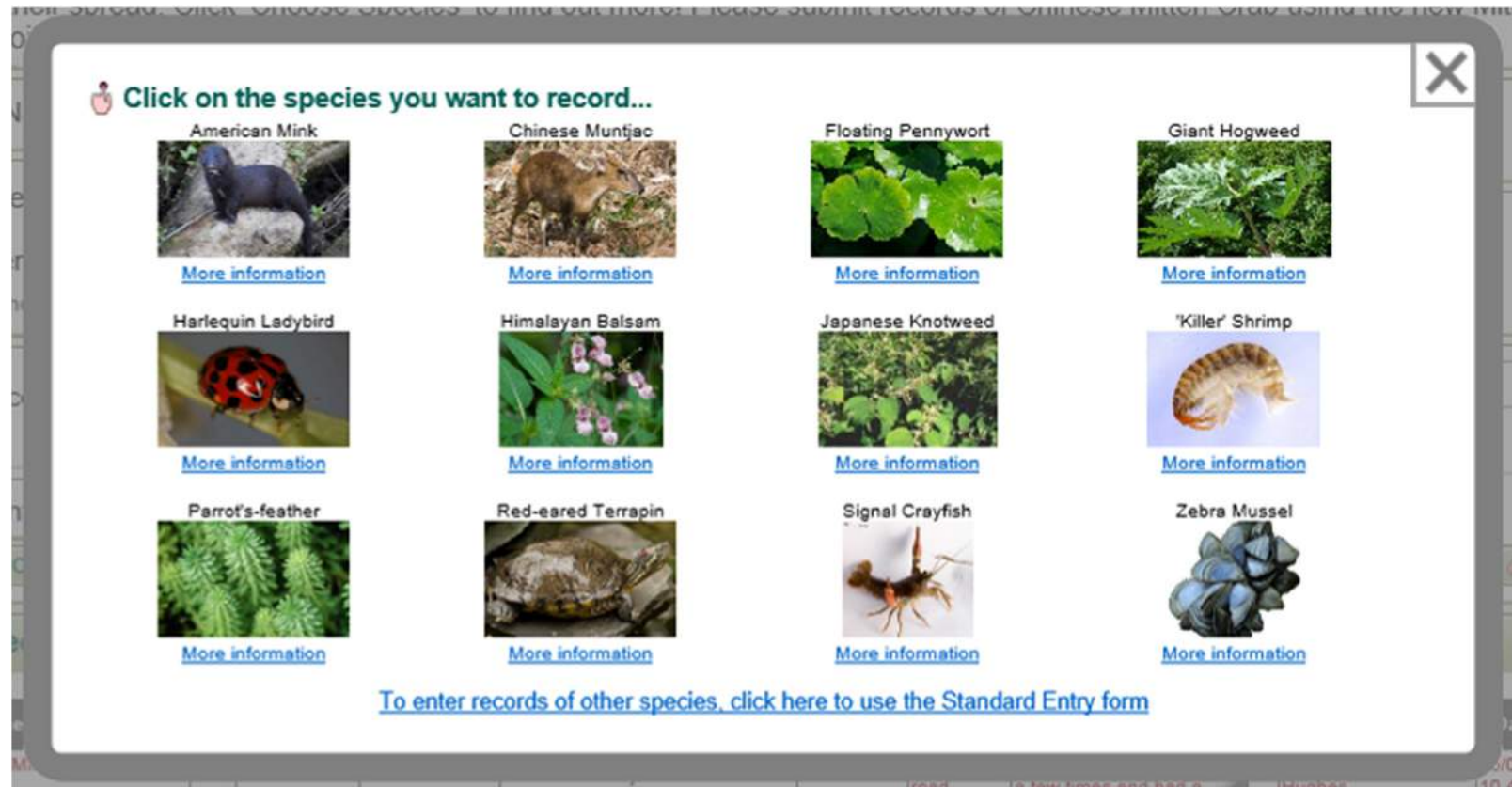
Topmouth gudgeon



Chytrid fungal disease



Reporting



Cofnod Record an Alien
www.cofnod.org.uk



Reporting



Smartphone Apps



Reporting



Alert species:

- Quagga Mussel
- Asian hornet
- Killer shrimp
- Water primrose
- Carpet sea squirt

GB Non-Native Species Secretariat
www.nonnativespecies.org



INNS Control Projects

- Dee Catchment Invasive Non-native Species Project
- Big Dee Day – the Invasion
- Alyn Valley Himalayan Balsam Control Project

